



Delaware Marine Debris Emergency Response Guide: Field Reference Guide

NOAA Marine Debris Program
National Oceanic and Atmospheric Administration
U.S. Department of Commerce
June 2024

Table of Contents

| | |
|---|-----------|
| 1 Introduction | 2 |
| 1.1. Purpose | 2 |
| 1.2. Scope of <i>Guide</i> | 2 |
| 2 Delaware Marine Debris Response Flowchart | 3 |
| 3 Agency Jurisdictions and Capabilities | 5 |
| 3.1. Agency Jurisdiction Map | 6 |
| 3.2. Response Capabilities | 7 |
| 4 Permitting and Compliance Requirements in Delaware | 10 |
| 5 Organization Contact Information | 12 |

1 Introduction

1.1 Purpose

This *Field Reference Guide* condenses information contained in the *Delaware Marine Debris Emergency Response Guide: Comprehensive Guidance Document (Guide)* to facilitate use during emergency response operations. While the *Comprehensive Guidance Document* serves as a complete reference for incident waterway debris response in Delaware, the *Field Reference Guide* includes agency contact information and the most pertinent information for quick reference in the field and during times of crisis. Both documents and subsequent versions will be posted on the National Oceanic and Atmospheric Administration’s (NOAA) Marine Debris Program website at <https://marinedebris.noaa.gov/>.

The purpose of this document is to improve preparedness for response and recovery operations following a disaster that generates marine debris in Delaware. The *Comprehensive Guidance Document* and complementary *Field Reference Guide* outline existing response structures at the local, state, and federal levels to facilitate a coordinated, well-managed, and immediate response to marine debris incidents impacting the State of Delaware. Individual organization roles and responsibilities are presented in a consolidated one-page flowchart, which functions as a decision tree for marine debris response. Organization jurisdictions are presented in a map in this document. A dynamic version of the jurisdiction map is also available [online](#). Additionally, permitting and compliance requirements for marine debris removal have been synthesized in a one-page reference handout.

1.2 Scope of *Guide*

The *Guide* addresses both natural and anthropogenic marine debris incidents affecting Delaware’s coastline. In 33 U.S.C. § 1956(3), marine debris is defined as any persistent solid material that is manufactured or processed and directly or indirectly, intentionally or unintentionally, disposed of or abandoned into the marine environment or Great Lakes. Although vegetative debris is not included in the legal definition for marine debris, Delaware stakeholders have identified it as a

common debris stream of concern following natural disasters. Therefore, in this document, the term marine debris is used more generally and also includes vegetative material and debris that could be exposed to or release oil, hazardous substances, pollutants, or contaminants that enters a waterway following an acute incident and poses a threat to the natural or built environment. This also includes shoreline and wetland debris and debris in some inland, non-tidal waterways.

2 Delaware Marine Debris Response Flowchart

The “Delaware Marine Debris Response Flowchart” included in this section provides a visual one-page representation of organization roles and responsibilities. The flowchart functions as a decision tree for waterway debris response with color-coded endpoints. Yellow endpoints represent response to marine debris that is exposed to or has the potential to release oil, hazardous substances, pollutants, or contaminants. Blue endpoints represent response to marine debris that is not exposed to and does not have the potential to release oil, hazardous substances, pollutants, or contaminants. Endpoints within the green shaded area indicate that response may occur under Robert T. Stafford Disaster Relief and Emergency Assistance Act (Stafford Act) authorities and/or funding.

Delaware Waterway Debris Response Flowchart

Waterway Debris/Incident Waterway Debris
Any solid material, including but not limited to vegetative debris and debris exposed to or that has the potential to release oil, hazardous substances, pollutants, or contaminants, that enters a waterway following an acute incident and poses a threat to the natural or man-made environment. This may include shoreline and wetland debris and debris in some inland, non-tidal waterways.

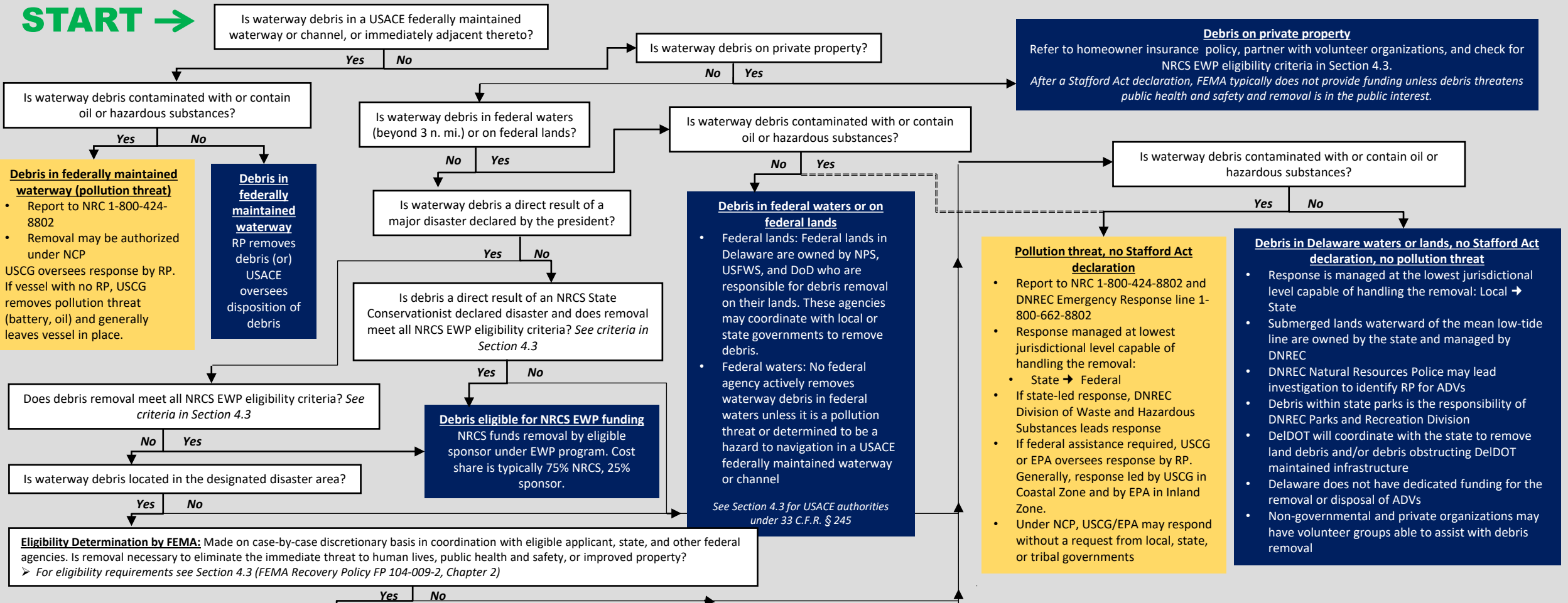
Acronyms

ADV – Abandoned and Derelict Vessel
DelDOT – Delaware Department of Transportation
DEMA – Delaware Emergency Management Agency
DNREC – Delaware Department of Natural Resources and Environmental Control
DoD – U.S. Department of Defense

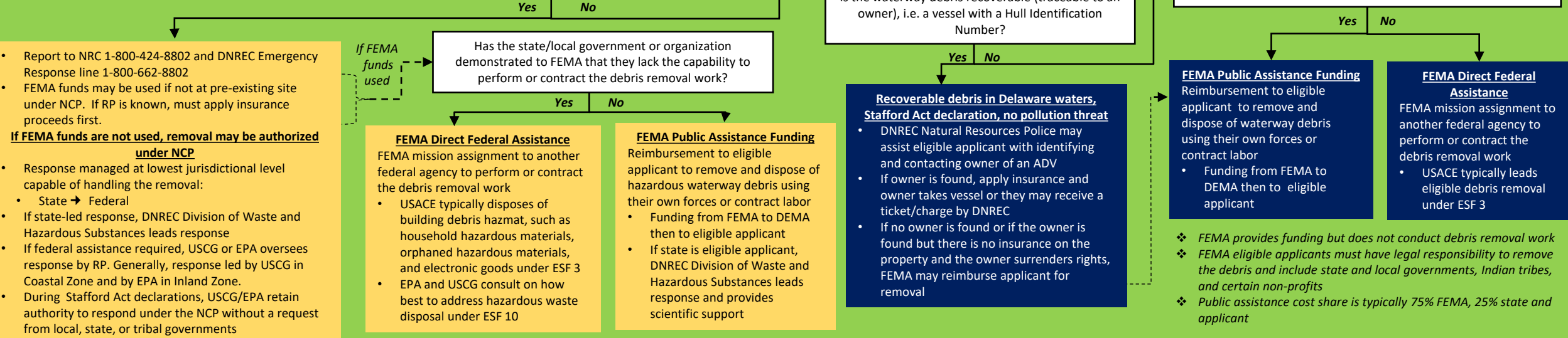
EPA – U.S. Environmental Protection Agency
ESF – Emergency Support Function
EWP – Emergency Watershed Protection
FEMA – Federal Emergency Management Agency
NCP – National Oil & Hazardous Substance Contingency Plan

NPS – National Park Service
NRC – National Response Center
NRCS – Natural Resources Conservation Service
RP – Responsible Party (Owner, Operator, Lessee)
USACE – U.S. Army Corps of Engineers
USCG – U.S. Coast Guard
USFWS – U.S. Fish and Wildlife Service

| Flowchart Key | Response to waterway debris that is exposed to or has the potential to release oil, hazardous substances, pollutants, or contaminants |
|---------------|--|
| | Response to waterway debris that is not exposed to and does not have the potential to release oil, hazardous substances, pollutants, or contaminants |
| | Response occurring under Stafford Act authorities and/or funds |



Stafford Act Declaration



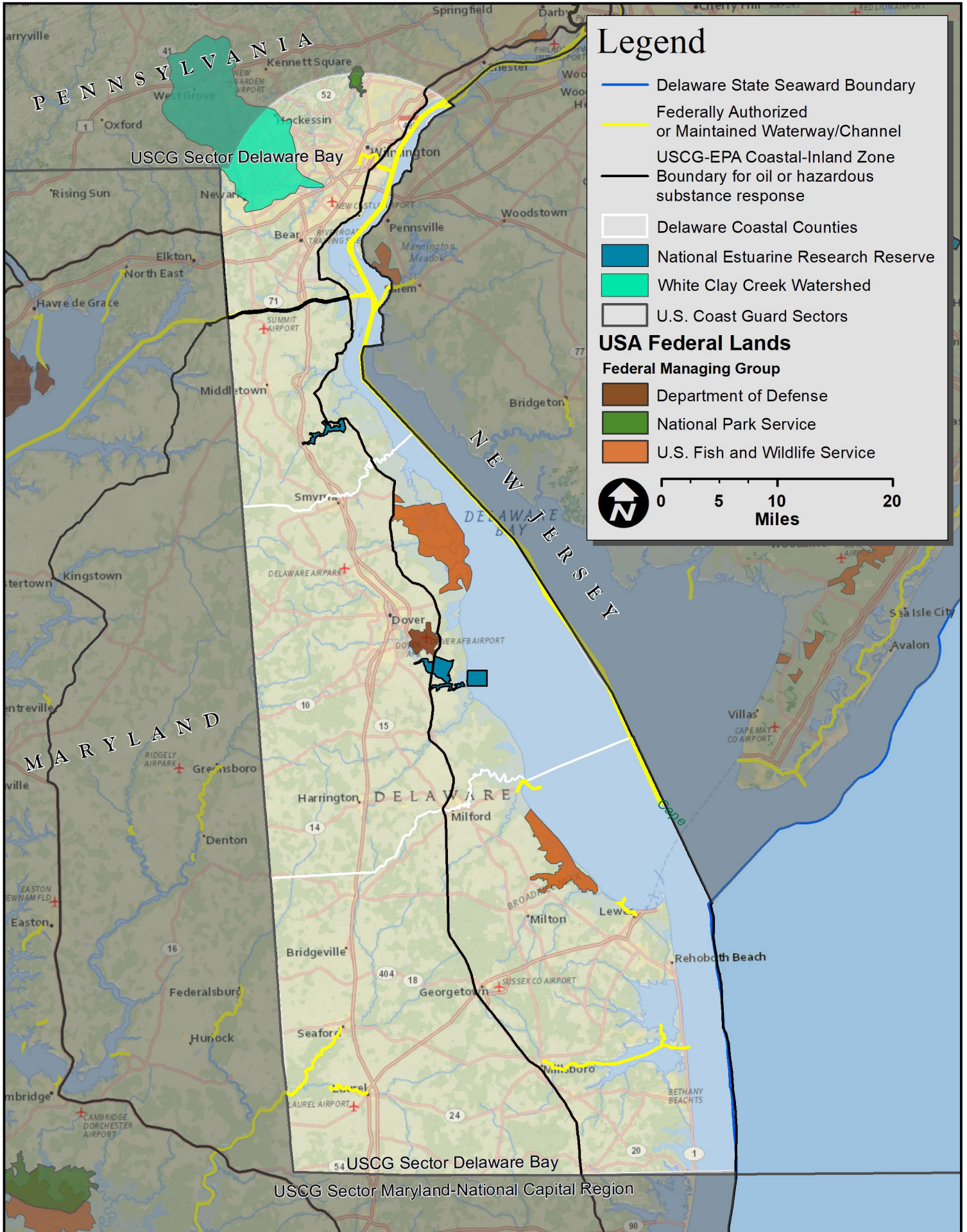
3 Agency Jurisdictions and Capabilities

3.1 Agency Jurisdiction Map

The “Delaware Marine Debris Response Map” on the following page displays relevant agency jurisdiction boundaries in Delaware. After an acute marine debris incident, the agency (or agencies) responsible for removing debris will vary depending on where the debris is located. This map includes information that stakeholders identified as important in determining jurisdiction within the state. A dynamic version of this map is also available [online](#) through the Environmental Response Management Application (ERMA).

3.2 Response Capabilities

Delaware Incident Waterway Debris Response Map



3.2 Response Capabilities

| | | Yes - In-house Capability | | FEMA Region III ¹ | NOAA ² | USACE | U.S. EPA ⁷ | USCG | DEMA ⁸ | DNREC Fish & Wildlife | DNREC Parks & Recreation | DE SHPO | DSWA |
|------------|--|----------------------------------|----------|------------------------------|-------------------|-------|-----------------------|------|-------------------|-----------------------|--------------------------|---------|----------|
| | | Contract - Contracted capability | | | | | | | | | | | |
| Technology | Aerial photography and video | Yes | Contract | Yes | Yes | Yes | Yes | | Yes | Contract | | | Yes |
| | Data Processing Software | | | Yes | | Yes | | | | | | | |
| | Remote Sensing | Contract | | Yes | | Yes | | | | | | | |
| | Multi-beam sonar | Contract | | Yes | Yes | | | | | Yes | | | |
| | Side-scan sonar | Contract | | Yes | Yes | | | | | Yes | | | |
| | Single-beam sonar | Contract | | Yes | Yes | | | | | Yes | | | |
| Manpower | Academic expertise/science & technology liaison | | | | Yes | Yes | | | | | | Yes | |
| | Compliance and permitting expertise | Yes | | Yes | Yes | Yes | Yes | | | | | Yes | |
| | Dive support | Contract | | Yes ³ | Yes | Yes | | | | Yes | | | |
| | Environmental expertise (location of sensitive areas and endangered species present, etc.) | Yes | Contract | Yes | Yes | Yes | | | | Yes | Yes | Yes | |
| | Geographic Information System (GIS) mapping and plotting of imagery | Yes | Contract | Yes | Yes | Yes | | | Yes | | Yes | | |
| | Public Affairs trained staff | Yes | Contract | Yes | Yes | Yes | | | Yes | Yes | Yes | Yes | |
| | State tribal representative | | | | Yes | Yes | | | | | | Yes | |
| | Volunteer manpower | Yes | Contract | | Yes | | | | | | | | Contract |
| Equipment | Absorbents and solvents for oil cleanup | | | | | | Contract | | | | | | |
| | Aircraft | Contract | | Yes | | Yes | | | | | | | |
| | All-terrain vehicles or other vehicles for difficult terrain | Contract | | | | Yes | Contract | | Yes ⁹ | Yes | | | |
| | Autonomous Underwater Vehicle | | | | | | | | | | | | |
| | Barge/Self-loading barge | Contract | | | | | | | | | | | |
| | Ocean Boom | | | | | | | | | | | | |

| | | | | | | | | | | |
|----------|----------|--|--|----------|--|--|--|--|--|--|
| Oil Boom | Contract | | | Contract | | | | | | |
|----------|----------|--|--|----------|--|--|--|--|--|--|

| Yes - In-house Capability | | FEMA Region III ¹ | NOAA ² | USACE | U.S. EPA ⁷ | USCG | DEMA ⁸ | DNREC Fish & Wildlife | DNREC Parks & Recreation | DE SHPO | DSWA |
|---|---|------------------------------|-------------------|------------------|-----------------------|----------|-------------------|-----------------------|--------------------------|---------|------|
| Contract - Contracted capability | | | | | | | | | | | |
| Equipment (Cont.) | Crane/knuckleboom crane | Contract | | | Contract | | | | | | |
| | Dredge | | | Yes | Cont. | Contract | | | | | |
| | Excavator | Contract | | Yes | Contract | | | | | | |
| | Ground Penetrating Radar | | | | Contract | | | | Yes | | |
| | In-situ burning | | | | | | | | | | |
| | Remotely Operated Vehicle | Contract | Yes | | | | | | | | |
| | Unmanned Aerial Vehicle | Contract | Yes | Yes | | | Yes ¹⁰ | Yes | | | |
| Vessels | Contract | Yes | Yes ⁵ | Yes | | | Yes | | | | |
| Logistics | Contract authority and oversight capabilities | Yes | Cont. | Yes | Yes | Yes | | Contract | | Yes | |
| | Disposal location for oiled debris | | | | | | | | | | |
| | Docks for wet storage of vessels | Contract | | | | | | Yes | Yes | | |
| | Facility suitable for establishing an Emergency Operations Center (EOC) | Yes | Cont. | | | | Yes | | | | |
| | Funding for marine debris removal | Yes | Yes ⁴ | Yes ⁶ | | | | | | | |
| | Pre-approved marine debris removal contractors | Contract | | | | | | | | | |
| | Pre-designated landfill/disposal sites | Contract | | | | | | | | | Yes |
| | Pre-event contracts and staged agreements in place | Contract | | | | | | | | | |
| | Staging/Off-Loading: Land with water access to stage, offload debris | Contract | | | | | | | | | |
| Staging/Off-Loading: Pre-designated staging, off-loading and special handling areas | Contract | | | | | | | | | | |
| Staging area for dry storage of vessels | Yes | Cont. | | | | | | Yes | | | |

| | | | | | | | | | | | | |
|--|--|-----|-------|--|--|--|--|----------|--|-----|--|--|
| | Other logistical support including fuel, housing, food, etc. | Yes | Cont. | | | | | Contract | | Yes | | |
|--|--|-----|-------|--|--|--|--|----------|--|-----|--|--|

Note: Capabilities which could be used during waterway debris response in Delaware were self-reported by organizations. Organizations were asked to indicate whether capabilities were in-house or were contracted through a third party. Footnotes refer to additional information provided for a particular capability.

- ¹FEMA Capabilities reported 'Contract' may be contracted out or mission assigned to another federal agency
- ²NOAA Some capabilities require contract support for staffing
- ³NOAA Dive capabilities do not include sites with oil or hazardous pollutants
- ⁴NOAA Funding through grant program and possible Congressional supplemental funding
- ⁵USACE Funding available during federally declared disasters via FEMA mission assignment
- ⁶USACE Survey vessels and one airboat available
- ⁷U.S. EPA EPA does not have statutory authority to respond to debris. EPA has authority to respond to oil and hazardous materials pursuant to and consistent with the National Contingency Plan in the inland zone of the U.S.
- ⁸DEMA DEMA is the lead/primary coordinating agency following a disaster. Resources will be coordinated through the state EOC.
- ⁹DEMA DEMA has one all-terrain vehicle
- ¹⁰DEMA DEMA has three operational, licensed drone pilots on staff and two drones

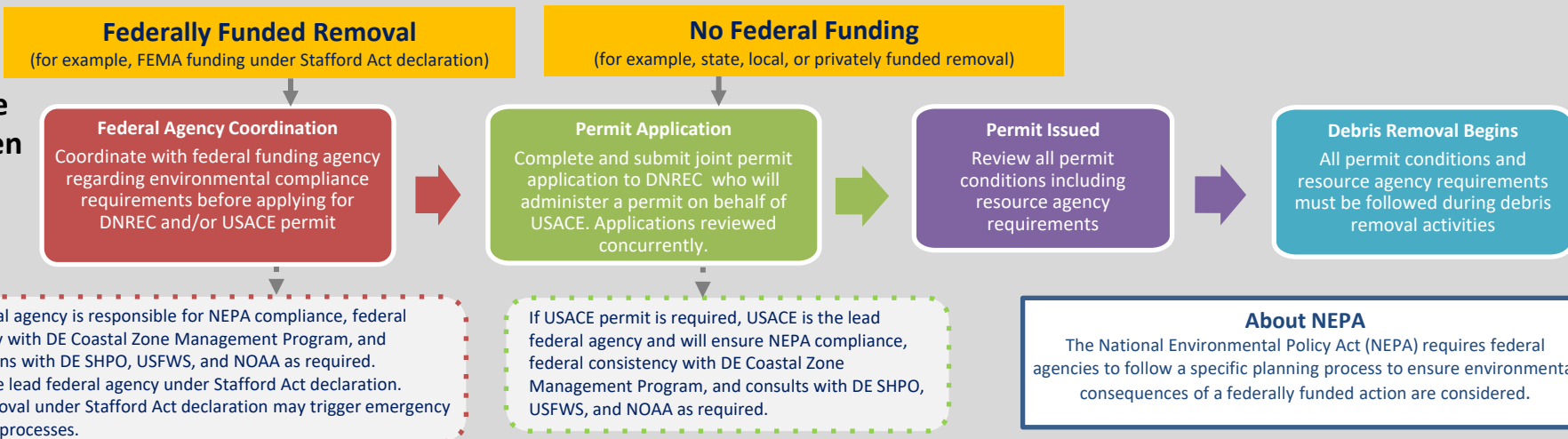
4 Permitting and Compliance Requirements in Delaware

The “Permitting and Compliance for Marine Debris Removal in Delaware” handout on the following page synthesizes permitting and compliance requirements that must be met before marine debris removal operations begin. The top portion of the one-pager outlines the process to follow to stay in compliance, while the bottom portion highlights specific state and federal agency requirements with general contact information.

Permitting and Compliance for Marine Debris Removal in Delaware

- In Delaware, a Delaware Department Natural Resources and Environmental Control (DNREC) Wetlands and Subaqueous Lands permit and/or a U.S. Army Corps of Engineers (USACE) permit may be required if debris removal involves excavating, dredging, the discharge of fill or dredge material, or involves structures or work impacting navigable waterways or wetlands.
- DNREC and USACE have a joint permit application process. Applicants must apply through DNREC and review will occur concurrently.
- The **lead federal agency** is responsible for compliance with National Environmental Policy Act (NEPA), federal coastal consistency, and consulting with resource agencies including Delaware State Historic Preservation Office (SHPO), U.S. Fish and Wildlife Service (USFWS), and National Oceanic and Atmospheric Administration (NOAA) Fisheries as required.

Compliance Process when Permit is Required



Agency Requirements and Legislation Details

U.S. Army Corps of Engineers (USACE)
Philadelphia District
Regulatory Program,
Dover Field Office
302-736-9764

- Permit(s) that may be required for debris removal work within waterways and wetlands:
 - SPGP-18** for discharge of dredge or fill material, or work and structures such as bulkheads, breakwaters, piers, docks, and pilings
 - NWP-3 Maintenance** for removal/maintenance of culverts, sediments or debris accumulated around outfalls, bridges, etc. in wetland areas
 - NWP-22 Removal of Vessels** for removal of wrecked, abandoned, or disabled vessels or other man-made obstructions to navigation
 - NWP-33 Temporary Construction, Access, and Dewatering** for temporary structures, work, and discharges necessary for construction activities or access fills
 - NWP-37 Emergency Watershed Protection & Rehabilitation** for work done under NRCS's Emergency Watershed Protection program
 - NWP-38 Cleanup Hazardous/Toxic Waste** for containment, stabilization, or removal of hazardous or toxic waste not under Superfund
 - NWP-45 Repair of Uplands Damaged by Discrete Events** for activities associated with the restoration of upland areas damaged by storms, floods, or other discrete events

DE Department of Natural Resources and Environmental Control (DNREC)
Wetlands and Waterways Section
302-739-9943

- Issues permits for projects that may negatively impact tidal wetlands or tidal and non-tidal waters
- A Wetlands and Subaqueous Lands permit may be required for debris removal projects that involve excavating, dredging, the discharge of fill or dredge material, or involves structures or work impacting wetlands.
- Permit applications must be submitted through DNREC, who will administer a permit on behalf of USACE

U.S. Fish and Wildlife Service (USFWS)
Delaware Bay Estuary Project,
Ecological Services Field Office
302-653-9152

- Consultation with Ecological Services Field Office required if marine debris response involves federal permits and/or funding (USACE permit, FEMA funding, etc.) to comply with:
 - Endangered Species Act to ensure actions do not adversely affect listed threatened or endangered species or critical habitat for land and freshwater species and certain marine species such as manatee
 - Coastal Barrier Resources Act to ensure actions do not encourage development on coastal barriers along the Atlantic coast

National Oceanic and Atmospheric Administration (NOAA)
NOAA Fisheries
ESA: 978-281-9306
EFH: 978-281-9102

- Consultation required if marine debris response involves federal permits and/or funding (USACE permit, FEMA funding, etc.) to comply with:
 - Endangered Species Act to ensure actions do not adversely affect listed threatened or endangered species or critical habitat for marine species
 - Magnuson-Stevens Fisheries Conservation and Management Act to ensure actions do not adversely affect Essential Fish Habitat

DE Division of Historical and Cultural Affairs
State Historic Preservation Office (SHPO)
302-736-7400

- Serves as the State Historic Preservation Office (SHPO) and assists state and federal agencies in compliance with the National Historic Preservation Act
- Consultation with DE SHPO is required if marine debris response involves a state or federal agency directly or through funding and/or issuance of permits or licenses (DNREC or USACE permits, FEMA funding, etc.) and has potential to affect historic properties

5 Organization Contact Information

Local Agencies/Organizations

| Agency | Division | Topic | Point of Contact | Phone | Email |
|--------------------|--------------------------------|-----------------------------|--|--------------------------------------|---------------------------------|
| City of Wilmington | Office of Emergency Management | Emergency Management | Willie J. Patrick, Jr., Director | - | willie.patrick@cj.state.de.us |
| | Public Works | Debris Management | Rae'nita Shazier, Special Assistant to Commissioner Kelly A. Williams & Public Works Coordinator | 302-576-3869 (o) 302-540-1827 (c) | rshazier@wilmingtonde.gov |
| | | Street Cleaning | Preston Foster, Street Cleaning Supervisor | - | pfoster@wilmingtonde.gov |
| Kent County | Emergency Management | Emergency Management | Colin T. Faulkner, Chief | 302-735-2200 | colin.faulkner@co.kent.de.us |
| | | | Brandon Olenik, Administrative Officer | - | brandon.olenik@co.kent.de.us |
| New Castle County | Department of Public Safety | Emergency Management | David Carpenter, Director | 302-395-2700 | david.carpenter@newcastlede.gov |
| Sussex County | Public Safety | Emergency Operations Center | Joe Thomas, Director | 302-855-7801 | jthomas@sussexcountyde.gov |
| | | | 24hr. line | 302-855-7803 | sussexec@sussexcountyde.gov |

State Agencies

| Agency | Division | Topic | Point of Contact | Phone | Email | |
|---|----------------------------|---|-------------------------------------|--|------------------------------|-------------------------------|
| Delaware Department of Agriculture | Animal Health | Emergency Operations | | | | |
| Delaware Department of Natural Resources and Environmental Control (DNREC) <i>Continued on next page</i> | Climate, Coastal, & Energy | Coastal Management Program | Bob Scarborough, Program Manager II | 302-739-9283 | bob.scarborough@delaware.gov | |
| | | St. Jones National Estuarine Research Reserve | Rachael Phillos, Manager | 302-735-3411 | rachael.phillos@delaware.gov | |
| | Fish & Wildlife | Natural Resources Police | Nicholas Couch | 302-739-6139 ex 110 | nicholas.couch@delaware.gov | |
| | Parks & Recreation | Cultural Resources | | Taylor Reynolds, Cultural Resources Unit Manager | 302-739-9186 | taylor.reynolds@delaware.gov |
| | | | | Rachel Perash, Archaeologist | 302-739-9188 | Rachel.perash@delaware.gov |
| | | State Parks | | James Wagner, Operations Administrator | 302-650-3073 | james.wagner@delaware.gov |
| | | | | Michael Krumrine, Planner IV | 302-739-9243 | michael.krumrine@delaware.gov |
| | | Grant Melville, Operations | 302-379-9008 | grant.melville@delaware.gov | | |

State Agencies Continued

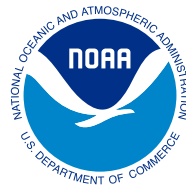
| Agency | Division | Topic | Point of Contact | Phone | Email |
|---|---|------------------------------------|--|----------------|--------------------------------|
| <i>Continued from previous page</i> Delaware Department of Natural Resources and Environmental Control (DNREC) | Waste & Hazardous Substances | Emergency Prevention and Response | 24-hr Line | 1-800-662-8802 | - |
| | | | Matt Higgins | 302-739-9404 | matthew.higgins@delaware.gov |
| | | Environmental Compliance | David Perrego, Senior Environmental Compliance Specialist | 302-739-9403 | david.perrego@delaware.gov |
| | Wetlands and Waterways | Permitting and Compliance | Matt Jones | 302-739-9943 | matthew.jones@delaware.gov |
| | Watershed Stewardship | Shoreline and Waterway Management | Kathleen Bergin | - | kathleen.bergin@delaware.gov |
| Delaware Department of Transportation (DelDOT) | Traffic Operations and Management | Debris Management | Dwayne Day, Homeland Security Planner | 302-659-4604 | dwayne.day@delaware.gov |
| | | | Jeff VanHorn, Asst. Director | 302-659-4606 | jeffrey.vanhorn@delaware.gov |
| Delaware Division of Historical and Cultural Affairs | State Historic Preservation Office (SHPO) | Historic and Cultural Preservation | Main Line | 302-736-7400 | - |
| | | | Gwenyth A. Davis, Deputy State Historic Preservation Officer | 302-736-7410 | gwen.davis@delaware.gov |
| | | | Stephanie Soder, RPA, Cultural Preservation Specialist | 302-736-7437 | stephanie.soder@delaware.gov |
| Delaware Emergency Management Agency (DEMA) | Planning | Recovery | DEMA Operations/Duty Officer Line | 302-734-6040 | ops2.dema@delaware.gov |
| | | | Leanne VanDerveer, Principal Planner | 302-222-6584 | leanne.vanderveer@delaware.gov |
| Delaware Solid Waste Authority (DSWA) | Facility Management | Debris Disposal | Justin Wagner, Facility Manager | 302-604-2222 | jww@dswa.com |
| University of Delaware | Delaware Sea Grant | - | Brittany Haywood, Coastal Ecology Specialist | | haywoodbl@udel.edu |
| | | | Christopher Petrone, Marine Advisory Service Director | 302-645-4308 | petrone@udel.edu |

Federal Agencies

| Agency | Division | Topic | Point of Contact | Phone | Email |
|--|---|--|---|---|----------------------------------|
| Bureau of Safety and Environmental Enforcement | Marine Trash and Debris Program | Planning and Coordination | Tarice Taylor, Marine Ecologist | 504-736-2551 | tarice.taylor@bsee.gov |
| Federal Emergency Management Agency (FEMA) | Region III | Recovery Division | Kevin Sheridan, Project Manager | 202-445-5061 | kevin.sheridan@fema.dhs.gov |
| | | Response and Recovery Division | Alicia Welch, Field Deployment Section Supervisor, Public Assistance Operations | 256-283-2267 | alicia.welch@fema.dhs.gov |
| | | | Cassandra Newman, Project Manager Section Supervisor, Public Assistance Deployment Operations | 202-655-8796 | cassandra.newman@fema.dhs.gov |
| | | Requests for Assistance for Capabilities | Region III Watch Center | 215-931-5757 | FEMA-R03-RRCC-WATCH@fema.dhs.gov |
| National Oceanic and Atmospheric Administration (NOAA) | National Marine Fisheries Service or NOAA Fisheries | EFH Consultation | General Contact | 978-281-9102 | - |
| | | | Jessie Murray, Marine Resource Management Specialist | | jessie.murray@noaa.gov |
| | | ESA Consultation | General Contact | 978-281-9306 | nmfs.gar.esa.section7@noaa.gov |
| | | | William Barnhill, Fishery Biologist | 978-282-8460 | william.barnhill@noaa.gov |
| | National Ocean Service (NOS) Office of Response and Restoration (ORR) Emergency Response Division | Emergency Response | Spill Emergency Phone (24-hour) | 206-526-4911 | |
| | | | Frank Csulak, USCG District 5 Scientific Support Coordinator | 732-371-1005 | frank.csulak@noaa.gov |
| | | | John Tarpley, Regional Operations Branch Chief | 206-526-6338 (o) 206-459-8638 (c) | john.tarpley@noaa.gov |
| | | | Katie Morgan, Mid-Atlantic Regional Coordinator | 240-215-7047 | katie.morgan@noaa.gov |
| | National Ocean Service (NOS) Office of Response and Restoration (ORR) Marine Debris Division | Marine debris response capabilities and coordination | Jason Rolfe, Response Coordinator | 240-533-6338 (O) 301-461-3236 (C) | jason.rolfe@noaa.gov |
| | | | Jessica Conway, Response Specialist | 410-570-4375 | jessica.conway@noaa.gov |
| NOS, Office of Coast Survey | | | Navigation and Preparation Response | Ryan Wartick, Navigation and Response Team Regional Manager | 571-305-0995 |

Federal Agencies Continued

| Agency | Division | Topic | Point of Contact | Phone | Email |
|--|--|---|---|----------------|----------------------------------|
| Natural Resources Conservation Service (NRCS) | Emergency Watershed Protection (EWP) Program | EWP Information | Shawn Anderson, Acting EWP Program Manager | 202-720-5795 | shawn.anderson@wdc.usda.gov |
| U.S. Army Corps of Engineers (USACE) Philadelphia District | Emergency Management Office | Emergency Management | James V. Monsu, Chief | 215-656-6757 | james.v.monsu@usace.army.mil |
| | | | Robert B. Eckhardt, Emergency Management Specialist | 215-656-6756 | robert.b.eckhardt@usace.army.mil |
| | Operations | Operations | Timothy J. Kelly, P.E., Deputy Chief | 215-656-6721 | timothy.j.kelly@usace.army.mil |
| | Regulatory Program | Permitting and Compliance | Michael Yost, Biologist | 267-240-5278 | michael.d.yost@usace.army.mil |
| U.S. Coast Guard (USCG) District 5 | Sector Delaware Bay | Potential to Release Oil or Hazardous Material | National Response Center (NRC) | 1-800-424-8802 | - |
| | | | 24-hr Local Emergency Line | 215-271-4940 | - |
| U.S. Environmental Protection Agency (EPA) | Region III | Environmental Protection | Bill Steuteville | 215-814-3264 | steuteville.william@epa.gov |
| | | Potential to release oil or hazardous substance | National Response Center (NRC) | 800-424-8802 | - |
| | | | 24-hr Local Emergency Line | 215-814-3255 | - |
| U.S. Fish and Wildlife Service (USFWS) | Ecological Services Office | Delaware Bay Estuary Project | Main Line | 302-653-9152 | R5ES_DPEP@fws.gov |



Gina M. Raimondo
United States Secretary of Commerce

Dr. Richard W. Spinrad
Under Secretary of Commerce for Oceans and Atmosphere
and NOAA Administrator

Nicole R. LeBoeuf
Assistant Administrator for Ocean Services
and Coastal Zone Management